

the
LSJ
collection

EDITION N°23



CONTENTS

SUITING	3
HEALTHCARE	23
SHIRTING	38
KNITWEAR	60
CUSTOM MAKE	67
STYLE AVAILABILITY CHART	69



MEN'S
SLIM CUT
JACKET

8610



A.

Black
Wool Tech

Charcoal
Wool Tech

Charcoal
Polyester

A. Men's slim cut jacket, style: 8610

Size	38	40	42	44	46	48
Half chest (cm)	50.5	53	55.5	58	60.5	63

MEN'S
STANDARD CUT
JACKET

8612



A.

Black
Micro Fibre

Navy
Micro Fibre

A. Men's standard cut jacket, style: 8612

Size	38	40	42	44	46	48
Half chest (cm)	55.5	58	60.5	63	65.5	68

LADIES
SINGLE BUTTON
JACKET

651

A.



Black
Micro Fibre

Navy
Micro Fibre

Black
Wool Tech

Charcoal
Wool Tech

Black
Polyester

Charcoal
Polyester

A. Shaped single button with pockets jacket, style: 651

Size	6	8	10	12	14	16	18	20	22	24	26
Half chest (cm)	43	45.5	48	50.5	53	56	59	62	65	68	71

MEN'S
FLAT FRONT
PANT

1022

A.



B.

Black
Micro Fibre

Navy
Micro Fibre

Black
Wool Tech

Charcoal
Wool Tech

Black
Polyester

Charcoal
Polyester

Navy
Poly/Viscose

- A. Long sleeve Flinders shirt, style: 2022L – see page 45
B. Relaxed fit flex waist pant, style: 1022

Size	77R	82R	87R	92R	97R	102R	102S	107S	112S	117S
Half waist (cm)	38.5	41	43.5	46	48.5	51	51	53.5	56	58.5

MEN'S
SLIM CUT
PANT

1027

A.

B.



Black
Wool Tech

Charcoal
Wool Tech

Black
Polyester

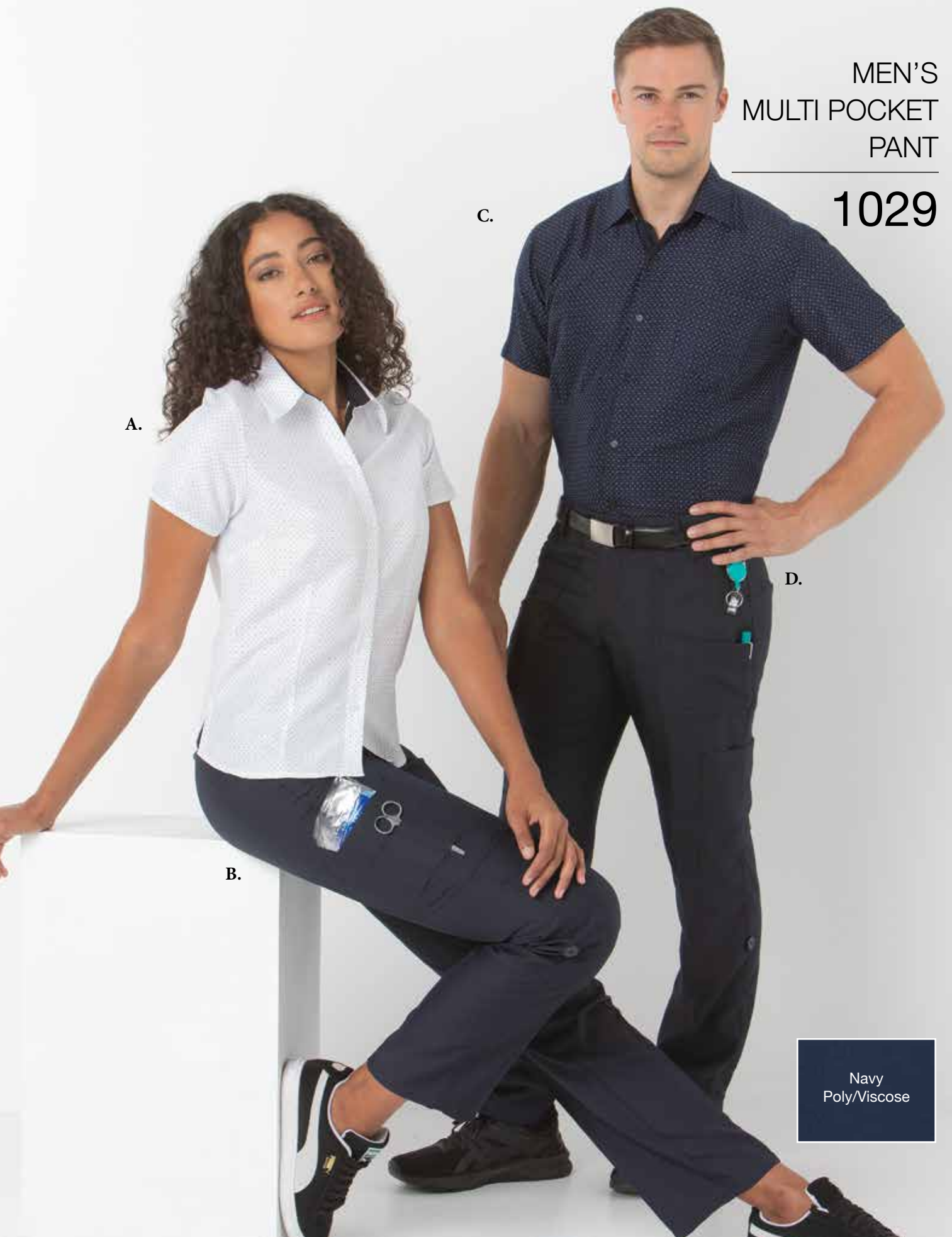
Charcoal
Polyester

- A. Long sleeve Newbury shirt, style: 2023L – see page 48
- B. Slim cut lower rise pant, style: 1027

Size	77R	82R	87R	92R	97R	102R
Half waist (cm)	38.5	41	43.5	46	48.5	51

MEN'S
MULTI POCKET
PANT

1029



- A. Short sleeve Flinders shirt, style: 297S – see page 23
- B. Flex waist multi pocket pant, style: 172K – see page 25
- C. Short sleeve Flinders shirt, style: 2097S – see page 45
- D. Flex waist multi pocket pant, style: 1029

Men's pant - Size	77R	82R	87R	92R	97R	102R
Half waist (cm)	38.5	41	43.5	46	48.5	51

LADIES
SLIM LEG
PANT

175

A.

B.



Black
Micro Fibre

Navy
Micro Fibre

- A. Long sleeve Newbury shirt, style: 296L – see page 46
- B. Midrise slim leg pant with belt loops, style: 175

Size	6	8	10	12	14	16	18	20
Half waist (cm)	35	37.5	40	42.5	45	47.5	50	52.5

LADIES
RELAXED
PANT

173K

A.

B.



Black
Polyester

Charcoal
Polyester

- A. Short sleeve crepe shirt, style: 242 – see page 39
- B. Midrise relaxed leg pant with belt loops, style: 173K

Size	6	8	10	12	14	16	18
Half waist (cm)	34.5	37	39.5	42	44.5	47	49.5

LADIES
LOW RISE
PANT

174K

A.

B.



Black
Wool Tech

Charcoal
Wool Tech

Black
Polyester

Charcoal
Polyester

Navy
Poly/Viscose

- A. Short sleeve Lonsdale shirt, style: 220 – see page 51
B. Low rise slim leg pant with belt loops, style: 174K

Size	6	8	10	12	14	16	18	20
Half waist (cm)	37	39.5	42	44.5	47	49.5	52	54.5

LADIES
FLEX WAIST
PANT

189

A.

B.



Black
Micro Fibre

Navy
Micro Fibre

Black
Wool Tech

Charcoal
Wool Tech

Black
Polyester

Charcoal
Polyester

Navy
Poly/Viscose

- A. Roll up sleeve crepe shirt, style: 245 – see page 40
- B. High rise relaxed leg flex waist pant, style: 189

Size	6	8	10	12	14	16	18	20	22
Half waist (cm)	35.5	38	40.5	43	45.5	48	50.5	53	55.5

LADIES
PULL ON
PANT

197

A.



B.

Black
Micro Fibre

Navy
Micro Fibre

Black
Polyester

Charcoal
Polyester

Navy
Poly/Viscose

A. Keyhole neck top, style: 709 – see page 43

B. Pull on elastic waist pant with tapered leg, style: 197

Size	14	16	18	20	22	24	26	28
Half waist Relaxed (cm)	44.5	47	49.5	52	54.5	57	59.5	62
Stretched (cm)	55	57.5	60	62.5	65	67.5	70	72.5

LADIES
CAPRI
PANT

176K

A.

B.



Black
Polyester

Navy
Poly/Viscose

- A. Boat neck top, style: 702 – see page 42
- B. Low rise slim leg capri pant with belt loops, style: 176K

Size	6	8	10	12	14	16	18	20
Half waist (cm)	37	39.5	42	44.5	47	49.5	52	54.5

LADIES
SHORTS

166K

A.



B.

Black
Polyester

Navy
Poly/Viscose

- A. Sleeveless crepe shirt, style: 241 – see page 38
- B. Flex waist shorts with belt loops, style: 166K

Size	6	8	10	12	14	16	18	20	22
Half waist (cm)	35.5	38	40.5	43	45.5	48	50.5	53	55.5

LADIES
KNIT
DRESS

454

A.



Black
Sorrento

Navy
Sorrento

A. Lightweight stretch knit dress, style: 454

Size	6	8	10	12	14	16	18	20
Half chest (cm)	44	46.5	49	51.5	54	56.5	59	61.5

LADIES
CAP SLEEVE
DRESS

420

A.



Black
Micro Fibre

Navy
Micro Fibre

Charcoal
Polyester

A. Semi fitted cap sleeve mid length suiting dress, style: 420

Size	6	8	10	12	14	16	18
Half chest (cm)	46.5	49	51.5	54	56.5	59	61.5

LADIES
SHORT LINE
SKIRT

3005

A.

B.

Black
Micro Fibre

Navy
Micro Fibre

- A. Short sleeve crepe shirt, style: 242 – see page 39
- B. Petite fit knee skimming skirt, style: 3005

Size	6	8	10	12	14	16	18
Half waist (cm)	31	33.5	36	38.5	41	43.5	46

LADIES
KICK PLEAT
SKIRT

315

A.



B.



Black
Micro Fibre

Navy
Micro Fibre

Black
Wool Tech

Charcoal
Wool Tech

- A. Short sleeve Gingham shirt, style: 200 – see page 50
- B. Low rise kick pleat belt loop skirt, style: 315

Size	6	8	10	12	14	16	18	20
Half waist (cm)	37	39.5	42	44.5	47	49.5	52	54.5

LADIES
MID LENGTH
SKIRT

319

A.

B.

Black
Micro Fibre

Navy
Micro Fibre

- A. Sleeveless crepe shirt, style: 241 – see page 38
B. Mid length skirt, style: 319

Size	6	8	10	12	14	Semi elastic waist on size 16+				
						16	18	20	22	24
Half waist (cm)	32.5	35	37.5	40	42.5	44	46.5	49	51.5	54

LADIES
POCKET
SKIRT

303

A.

B.



Charcoal
Polyester

- A. Boat neck top, style: 702 – see page 42
- B. Midrise pencil line skirt with pockets, style: 303

Size	6	8	10	12	14	16	18	20	22	24
Half waist (cm)	36.5	38.5	41	43.5	46	48	50	52	54	56

LADIES
ANKLE
SKIRT

329

A.

B.



Black
Micro Fibre

Navy
Micro Fibre

- A. Boat neck top, style: 702 – see page 42
- B. Ankle length skirt, style: 329

Size	6	8	10	12	14	Semi elastic waist on size 16+				
	16	18	20	22	24	16	18	20	22	24
Half waist (cm)	32.5	35	37.5	40	42.5	44	46.5	49	51.5	54

LADIES
SHORT SLEEVE
SHIRT

297S

LADIES
FRONT PLEAT
SKIRT

301

A.

B.



Black
Wool Tech

Charcoal
Wool Tech

Navy
Poly/Viscose

- A. Short sleeve Flinders shirt, style: 297S
B. Midrise pencil line skirt with front pleat and pockets, style: 301

Shirt size	6	8	10	12	14	16	18	20	22	24	26
Half chest (cm)	45	47.5	50	52.5	55	57.5	60	63	66	69	72

Skirt size	6	8	10	12	14	16	18	20
Half waist (cm)	34.5	37	39.5	42	44.5	47.5	50	53

LADIES
KICK PLEAT
POCKET SKIRT

375K

A.



B.

Black
Polyester

Charcoal
Polyester

Navy
Poly/Viscose

- A. Short sleeve End on End shirt, style: 200 – see page 52
B. Low rise kick pleat belt loop skirt with pockets, style: 375K

Size	6	8	10	12	14	16	18	20
Half waist (cm)	37	39.5	42	44.5	47	49.5	52	54.5

LADIES
MULTI POCKET
PANT

172K

A.



B.

Black
Polyester

Charcoal
Polyester

Navy
Poly/Viscose

- A. Easy fit Breeze shirt, style: 2162 – see page 58
- B. Flex waist multi pocket pant, style: 172K

Size	6	8	10	12	14	16	18	20	22	24
Half waist (cm)	35	37.5	40	42.5	45	47.5	50	52.5	55	57.5

UNISEX STRETCH
CLINICAL SCRUB
TOP

553

UNISEX STRETCH
CLINICAL SCRUB
PANT

505

A.

B.



Navy
Poly/Rayon/
Spandex

- A. Unisex stretch clinical scrub top, style 553
- B. Unisex stretch clinical scrub pants, style 505

Scrub Top Size	3XS	2XS	XS	S	M	L	XL	2XL	3XL	4XL	5XL	6XL
Half chest (cm)	47	49.5	52	54.5	57	59.5	62	64.5	67.5	70.5	73.5	76.5



A.

B.

UNISEX STRETCH
CLINICAL SCRUB
TOP

553

UNISEX STRETCH
CLINICAL SCRUB
PANT

505

Navy
Poly/Rayon/
Spandex

A. Unisex stretch clinical scrub top, style 553
B. Unisex stretch clinical scrub pants, style 505

Scrub Pant Size	3XS	2XS	XS	S	M	L	XL	2XL	3XL	4XL	5XL	6XL
Half waist (cm)	30	32.5	35	37.5	40	42.5	45	47.5	50	52.5	55	57.5

Waist stretches and additional 10cm

URBANE
SCRUB
TOP

LA9063

URBANE
SCRUB
PANT

LA9306



A.

B.

Teal
Rayon/Poly/
Spandex

A. Ladies scrub top, style LA9063
B. Ladies elastic waist pant, style LA9306

Top Size	XS	S	M	L	XL	2XL	3XL
Half chest (cm)	45	48	51	54.5	59	64	69
Pant Size	XS	S	M	L	XL	2XL	3XL
Half waist (cm)	38	40.5	43.5	47	51	55	60

Waist stretches and additional 5cm

URBANE
SCRUB
TOP

LA9063

URBANE
SCRUB
PANT

LA9306

A.

B.



Graphite
Rayon/Poly/
Spandex

A. Ladies scrub top, style LA9063
B. Ladies elastic waist pant, style LA9306

Top Size	XS	S	M	L	XL	2XL	3XL
Half chest (cm)	45	48	51	54.5	59	64	69
Pant Size	XS	S	M	L	XL	2XL	3XL
Half waist (cm)	38	40.5	43.5	47	51	55	60

Waist stretches and additional 5cm



URBANE
SCRUB
TOP

LA9063

URBANE
SCRUB
PANT

LA9306

Caribbean
Rayon/Poly/
Spandex

A. Ladies scrub top, style LA9063
B. Ladies elastic waist pant, style LA9306

Top Size	XS	S	M	L	XL	2XL	3XL
Half chest (cm)	45	48	51	54.5	59	64	69
Pant Size	XS	S	M	L	XL	2XL	3XL
Half waist (cm)	38	40.5	43.5	47	51	55	60

Waist stretches and additional 5cm

URBANE
SCRUB
TOP

LA9063

URBANE
SCRUB
PANT

LA9306

A.

B.



Ciel Blue
Rayon/Poly/
Spandex

A. Ladies scrub top, style LA9063
B. Ladies elastic waist pant, style LA9306

Top Size	XS	S	M	L	XL	2XL	3XL
Half chest (cm)	45	48	51	54.5	59	64	69
Pant Size	XS	S	M	L	XL	2XL	3XL
Half waist (cm)	38	40.5	43.5	47	51	55	60

Waist stretches and additional 5cm

URBANE
SCRUB
TOP

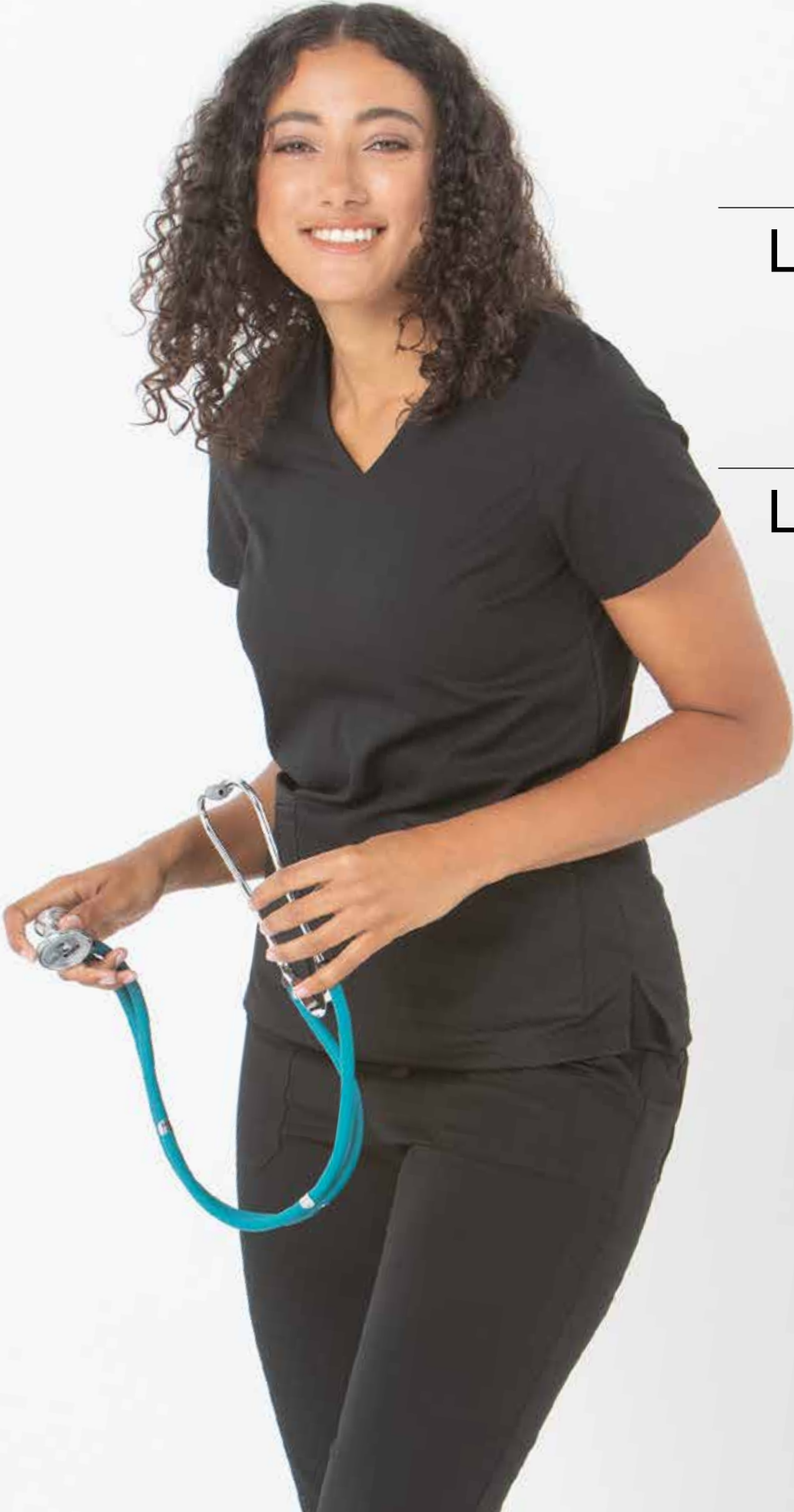
LA9063

URBANE
SCRUB
PANT

LA9306

A.

B.



Black
Rayon/Poly
Spandex

A. Ladies scrub top, style LA9063
B. Ladies elastic waist pant, style LA9306

Top Size	XS	S	M	L	XL	2XL	3XL
Half chest (cm)	45	48	51	54.5	59	64	69
Pant Size	XS	S	M	L	XL	2XL	3XL
Half waist (cm)	38	40.5	43.5	47	51	55	60

Waist stretches and additional 5cm

URBANE
SCRUB
TOP

LA9063

URBANE
SCRUB
PANT

LA9329

A.

B.



True Navy
Rayon/Poly
Spandex

A. Ladies scrub top, style LA9063
B. Ladies back elastic pant, style LA9329

Top Size	XS	S	M	L	XL	2XL	3XL
Half chest (cm)	45	48	51	54.5	59	64	69
Pant Size	XS	S	M	L	XL	2XL	3XL
Half waist (cm)	40.5	43	46.5	50	54	58	62

LADIES
MOCK WRAP
TOP

550

LADIES
SKINNY LEG
SCRUB PANT

500



A.

B.

Navy stretch
Poly/Viscose

A. Ladies stretch mock wrap scrub top, style 550

B. Ladies stretch skinny leg scrub pant with back elastic, style 500

Scrub Top Size	6	8	10	12	14	16	18	20	22	24	26
Half chest (cm)	47.5	50	52.5	55	57.5	60	62.5	65.5	68.5	71.5	74.5

Scrub Pant Size	6	8	10	12	14	16	18	20	22	24	26
Half waist (cm)	34	36.5	39	41.5	44	46.5	49	51.5	54	56.5	59

Waist stretches and additional 5cm

UNISEX
SCRUB
TOP

552

UNISEX
JOGGER
SCRUB PANT

502

A.

B.



Navy stretch
Poly/Viscose

- A. Unisex stretch scrub top, style 552
- B. Unisex stretch jogger scrub pants, style 502

Scrub Top Size	2XS	XS	S	M	L	XL	2XL	3XL	4XL	5XL	6XL
Half chest (cm)	49.5	52	54.5	57	59.5	62	64.5	67.5	70.5	73.5	76.5

Scrub Pant Size	2XS	XS	S	M	L	XL	2XL	3XL	4XL	5XL	6XL
Half waist (cm)	32.5	35	37.5	40	42.5	45	47.5	50	52.5	55	57.5

Waist stretches and additional 5cm

LADIES
LOW RISE
PANT

174K

A.

B.



Black
Polyester

Charcoal
Polyester

Navy
Poly/Viscose

A. Stretch Freedom action back shirt with pockets, style: 214 – see page 55

B. Low rise slim leg pant with belt loops, style: 174K

Size	6	8	10	12	14	16	18	20
Half waist (cm)	37	39.5	42	44.5	47	49.5	52	54.5

MEN'S
PHARMACY
JACKET

910S

LADIES
PHARMACY
JACKET

903S

A.

B.



White
Lusterlene

- A. Men's side stud Pharmacy jacket, style: 910S
B. Ladies shaped Pharmacy jacket, style: 903S

Men's jacket Size	3(36)	4(38)	5(40)	6(42)	7(44)	8(46)	9(48)
Half chest (cm)	54	56.5	59	61.5	65	66.5	69
Ladies jacket Size	8	10	12	14	16	18	20
Half chest (cm)	48.5	51	53.5	56	58.5	61	63.5

LADIES
SLEEVELESS
CREPE TOP

241

A.



Black
Stretch Crepe

Navy
Stretch Crepe

Sky
Stretch Crepe

A. Sleeveless stretch crepe top with front pleat, style: 241

Size	6	8	10	12	14	16	18
Half chest (cm)	44	46.5	49	51.5	54	56.5	59

LADIES
V-NECK
CREPE TOP

242

A.



Black
Stretch Crepe

Navy
Stretch Crepe

Sky
Stretch Crepe

A. ½ sleeve v-neck stretch crepe top, style: 242

Size	6	8	10	12	14	16	18	20	22	24	26
Half chest (cm)	49	51.5	54	56.5	59	61.5	64	66.5	69	71.5	74

LADIES
MANDARIN
CREPE TOP

245

A.



Black
Stretch Crepe

Navy
Stretch Crepe

Sky
Stretch Crepe

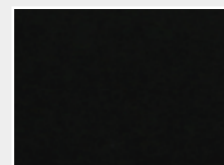
A. Roll up long sleeve mandarin crepe top, style: 245

Size	6	8	10	12	14	16	18	20	22	24	26
Half chest (cm)	49	51.5	54	56.5	59	61.5	64	66.5	69	71.5	74

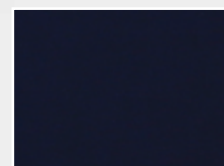
LADIES
PLEAT
FRONT TOP

711

A.



Black Sorrento Knit



Navy Sorrento Knit



Pewter Sorrento Knit



Print 60 Sorrento Knit



Red Sorrento Knit

A. Round neck pleat front top, style: 711

Size	8	10	12	14	16	18	20	22
Half chest (cm)	45	47.5	50	52.5	55	57.5	60	62.5

LADIES
BOAT NECK
TOP

702

A.



Black Sorrento Knit



Navy Sorrento Knit



Pewter Sorrento Knit



Print 60 Sorrento Knit



Red Sorrento Knit

A. Boat neck top, style: 702

Size	8	10	12	14	16	18	20	22
Half chest (cm)	45	47.5	50	52.5	55	57.5	60	62.5

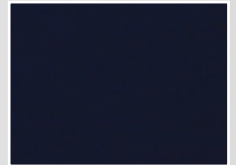
LADIES
KEYHOLE
TOP

709

A.



Black Sorrento Knit



Navy Sorrento Knit



Pewter Sorrento Knit



Print 60 Sorrento Knit



Red Sorrento Knit

A. Keyhole neck top with banded hem, style: 709

Size	8	10	12	14	16	18	20	22
Half chest (cm)	51	53.5	56	58.5	61	63.5	65	69



MEN'S
FLINDERS SHORT
SLEEVE SHIRT

2097S

LADIES
FLINDERS LONG
SLEEVE SHIRT

297L



- A. Men's short sleeve Breathable Polyester shirt, style: 2097S
- B. Ladies long sleeve fold back cuff Breathable Polyester shirt, style: 297L - See page 23 for short sleeve version

Men's Shirt Size	XS	S	M	L	XL	2XL
Half chest (cm)	53	55.5	58	60.5	63	65.5

Ladies Shirt Size	6	8	10	12	14	16	18	20	22	24	26
Half chest (cm)	45	47.5	50	52.5	55	57.5	60	63	66	69	72

MEN'S
FLINDERS LONG
SLEEVE SHIRT

2022L

LADIES
FLINDERS
TUNIC SHIRT

211

A.

B.



A. Men's long sleeve Breathable Polyester shirt, style: 2022L

B. Ladies tunic with pockets Breathable Polyester shirt,
style: 211

Men's Shirt Size	XS	S	M	L	XL	2XL
Half chest (cm)	53	55.5	58	60.5	63	65.5

Ladies Shirt Size	6	8	10	12	14	16	18	20	22	24	26
Half chest (cm)	45	47.5	50	52.5	55	57.5	60	63	66	69	72



MEN'S
NEWBURY
LONG SLEEVE
SHIRT

2026L

LADIES
NEWBURY
LONG SLEEVE
SHIRT

296L



White
Newbury

- A. Men's long sleeve Newbury cotton rich shirt, style: 2026L/2066L
- B. Ladies long sleeve Newbury cotton rich shirt, style: 296L

Men's Shirt Size	XS	S	M	L	XL	2XL	44	46	48	50	
Half chest (cm)	53	55.5	58	60.5	63	65.5	66.5	69	71.5	74	
	Euro cut style 2026L						Relaxed cut style 2066L				
Ladies Shirt Size	6	8	10	12	14	16	18	20	22	24	26
Half chest (cm)	45	47.5	50	52.5	55	57.5	60	63	66	69	72

MEN'S
NEWBURY
LONG SLEEVE
SHIRT

2024L

LADIES
NEWBURY
SHORT SLEEVE
SHIRT

244S

A.

B.



A. Men's long sleeve Newbury cotton rich shirt, style: 2024L/2044L

B. Ladies short sleeve Newbury cotton rich shirt, style: 244S

Men's Shirt Size	XS	S	M	L	XL	2XL	44	46	48	50
Half chest (cm)	53	55.5	58	60.5	63	65.5	66.5	69	71.5	74
	Euro cut style 2026L						Relaxed cut style 2066L			

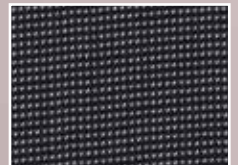
Ladies Shirt Size	6	8	10	12	14	16	18	20	22	24	26
Half chest (cm)	45	47.5	50	52.5	55	57.5	60	63	66	69	72

MEN'S
NEWBURY
LONG SLEEVE
SHIRT

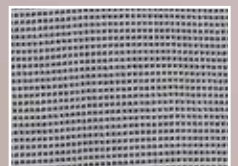
2023L

LADIES
NEWBURY
LONG SLEEVE
SHIRT

233L



Black Newbury



Grey Newbury

- A. Men's long sleeve Newbury cotton rich shirt, style: 2023L/2033L
- B. Ladies long sleeve Newbury cotton rich shirt, style: 233L

Men's Shirt Size	XS	S	M	L	XL	2XL	44	46	48	50	
Half chest (cm)	53	55.5	58	60.5	63	65.5	66.5	69	71.5	74	
	Euro cut style 2026L						Relaxed cut style 2066L				
Ladies Shirt Size	6	8	10	12	14	16	18	20	22	24	26
Half chest (cm)	45	47.5	50	52.5	55	57.5	60	63	66	69	72

LADIES
BOURKE ST
SHORT SLEEVE
SHIRT

299S

MEN'S
BOURKE ST
LONG SLEEVE
SHIRT

2022L



Wisteria Bourke Street



Blue Bourke Street

- A. Ladies short sleeve textured stripe cotton rich shirt, style: 299S
 B. Men's long sleeve textured stripe cotton rich shirt, style: 2022L/2010L
 (also available in short sleeve - Style 2022S)

Men's Shirt Size	S	M	L	XL	2XL	44	46	48	50		
Half chest (cm)	55.5	58	60.5	63	65.5	66.5	69	71.5	74		
	Euro cut style 2022L					Relaxed cut style 2010L					
Ladies Shirt Size	6	8	10	12	14	16	18	20	22	24	26
Half chest (cm)	45	47.5	50	52.5	55	57.5	60	63	66	69	72

MEN'S
GINGHAM
LONG SLEEVE
SHIRT

2022L

LADIES
GINGHAM
SHORT
SLEEVE
SHIRT

200



- A. Ladies short sleeve Gingham check cotton rich shirt, style: 200 – Long sleeve available in Blue only
 B. Men's long sleeve Gingham check cotton rich shirt, style: 2022L/2010L

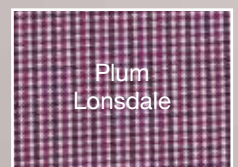
Men's Shirt Size	S	M	L	XL	2XL	44	46	48	50
Half chest (cm)	55.5	58	60.5	63	65.5	66.5	69	71.5	74
	Euro cut style 2022L					Relaxed cut style 2010L			
Ladies Shirt Size	6	8	10	12	14	16	18	20	22
Half chest (cm)	45	47.5	50	52.5	55	57.5	60	63	66

MEN'S
LONSDALE
LONG SLEEVE
SHIRT

2022L

LADIES
LONSDALE
SHORT
SLEEVE
SHIRT

220



- A. Ladies short sleeve Lonsdale check cotton rich shirt, style: 220
- B. Men's long sleeve Lonsdale check cotton rich shirt, style: 2022L/2010L

Men's Shirt Size	S	M	L	XL	2XL	44	46	48	50
Half chest (cm)	55.5	58	60.5	63	65.5	66.5	69	71.5	74
	Euro cut style 2022L					Relaxed cut style 2010L			

Ladies Shirt Size	6	8	10	12	14	16	18	20	22
Half chest (cm)	45	47.5	50	52.5	55	57.5	60	63	66

MEN'S
END ON END
LONG SLEEVE
SHIRT

2022L

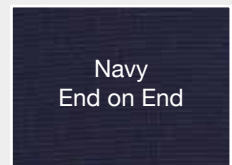
LADIES
END ON END
SHORT
SLEEVE
SHIRT

200



A.

B.



- A. Men's cotton rich shirt with contrast inner collar & cuff, style: 2022L/2010L
 B. Ladies cotton rich shirt with contrast inner collar & cuff, style: 200

Men's Shirt Size	S	M	L	XL	2XL	44	46	48	50
Half chest (cm)	55.5	58	60.5	63	65.5	66.5	69	71.5	74
	Euro cut style 2022L					Relaxed cut style 2010L			
Ladies Shirt Size	6	8	10	12	14	16	18	20	22
Half chest (cm)	45	47.5	50	52.5	55	57.5	60	63	66



MEN'S
SHADOW STRIPE
LONG SLEEVE
SHIRT

2010L

LADIES
SHADOW
STRIPE
3/4 SLEEVE
SHIRT

2172



- A. Men's long sleeve poly/cotton shirt, style: 2010L
- B. Ladies ¾ sleeve poly/cotton shirt, style: 2172

Men's Shirt Size	38	40	42	44	46	48	50
Half chest (cm)	59	61.5	64	66.5	69	71.5	74

Ladies Shirt Size	6	8	10	12	14	16	18	20	22	24	26
Half chest (cm)	45	47.5	50	52.5	55	57.5	60	63	66	69	72

TUNIC
SHIRT

211

A.



A. Tunic shirt with pockets, style: 211

Tunic Size	6	8	10	12	14	16	18	20	22	24	26
Half chest (cm)	45	47.5	50	52.5	55	57.5	60	63	66	69	72

TWIN
POCKET
SHIRT

214

A.



A. Action back shirt with pockets, style: 214

Tunic Size	6	8	10	12	14	16	18	20	22	24	26
Half chest (cm)	45	47.5	50	52.5	55	57.5	60	63	66	69	72

LADIES CAP
SLEEVE
SHIRT

2175

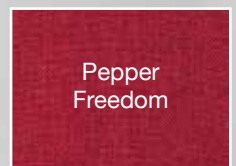
A.



Blast
Freedom



Harbour
Freedom



Pepper
Freedom



Periwinkle
Freedom

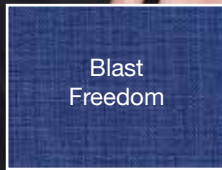
A. Semi fitted cap sleeve shirt in Breathable Polyester, style: 2175

Size	6	8	10	12	14	16	18
Half chest (cm)	45.5	48	50.5	53	55.5	58	60.5

A.



B.



3/4 SLEEVE FREEDOM SHIRT

2172

ACTION BACK FREEDOM SHIRT

2162

A. Semi fitted 3/4 sleeve breathable polyester shirt, style: 2172

B. Easy fit action back breathable polyester shirt, style: 2162

3/4 sleeve Size	6	8	10	12	14	16	18	20	22
Half chest (cm)	45	47.5	50	52.5	55	57.5	60	65.5	68.5

Action back Size	6	8	10	12	14	16	18	20	22	24	26	28
Half chest (cm)	48.5	51	53.5	56	58.5	61	63.5	65	69	72	75.5	79

ACTION
BACK BREEZE
SHIRT

2162

A.



Print 50 Breeze



Print 51 Breeze



Print 52 Breeze



Print 53 Breeze

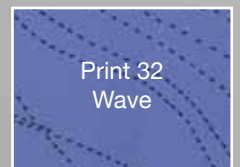
A. Easy fit action back breathable polyester shirt, style: 2162

Size	6	8	10	12	14	16	18	20	22	24	26	28
Half chest (cm)	48.5	51	53.5	56	58.5	61	63.5	65	69	72	75.5	79

ACTION
BACK WAVE
SHIRT

2162

A.



A. Easy fit action back breathable polyester shirt, style: 2162

Size	6	8	10	12	14	16	18	20	22	24	26	28
Half chest (cm)	48.5	51	53.5	56	58.5	61	63.5	65	69	72	75.5	79

LONG LINE
CARDIGAN

WBV4

A.



Black
Wool/Acrylic

Charcoal
Wool/Acrylic

Navy
Wool/Acrylic



A. Easy fit long line Wool/Acrylic cardigan, style: WBV4

Size	2XS	XS	S	M	L	XL	2XL	3XL	4XL
Half chest (cm)	42	44.5	47	49.5	52	54.5	57	59.5	62

LADIES
V-NECK VEST

WB412

A.



Black
Wool/Acrylic

Charcoal
Wool/Acrylic

Navy
Wool/Acrylic



A. Shaped v-neck Wool/Acrylic vest, style: WB412

Size	XS	S	M	L	XL	2XL
Half chest (cm)	43	45.5	48	50.5	53	55.5

LADIES
V-NECK
JUMPER

WB414

A.



Black
Wool/Acrylic

Navy
Wool/Acrylic

A. Shaped v-neck Wool/Acrylic jumper, style: WB414

Size	XS	S	M	L	XL	2XL
Half chest (cm)	43	45.5	48	50.5	53	55.5

SINGLE
BUTTON
CARDIGAN

WB410

A.



Black
Wool/Acrylic

Charcoal
Wool/Acrylic

Navy
Wool/Acrylic



A. Single button short line Wool/Acrylic cardigan, style: WB410

Size	XS	S	M	L	XL	2XL
Half chest (cm)	43	45.5	48	50.5	53	55.5

EASY FIT
CARDIGAN
VEST

WBV2

A.



Navy
Wool/Acrylic

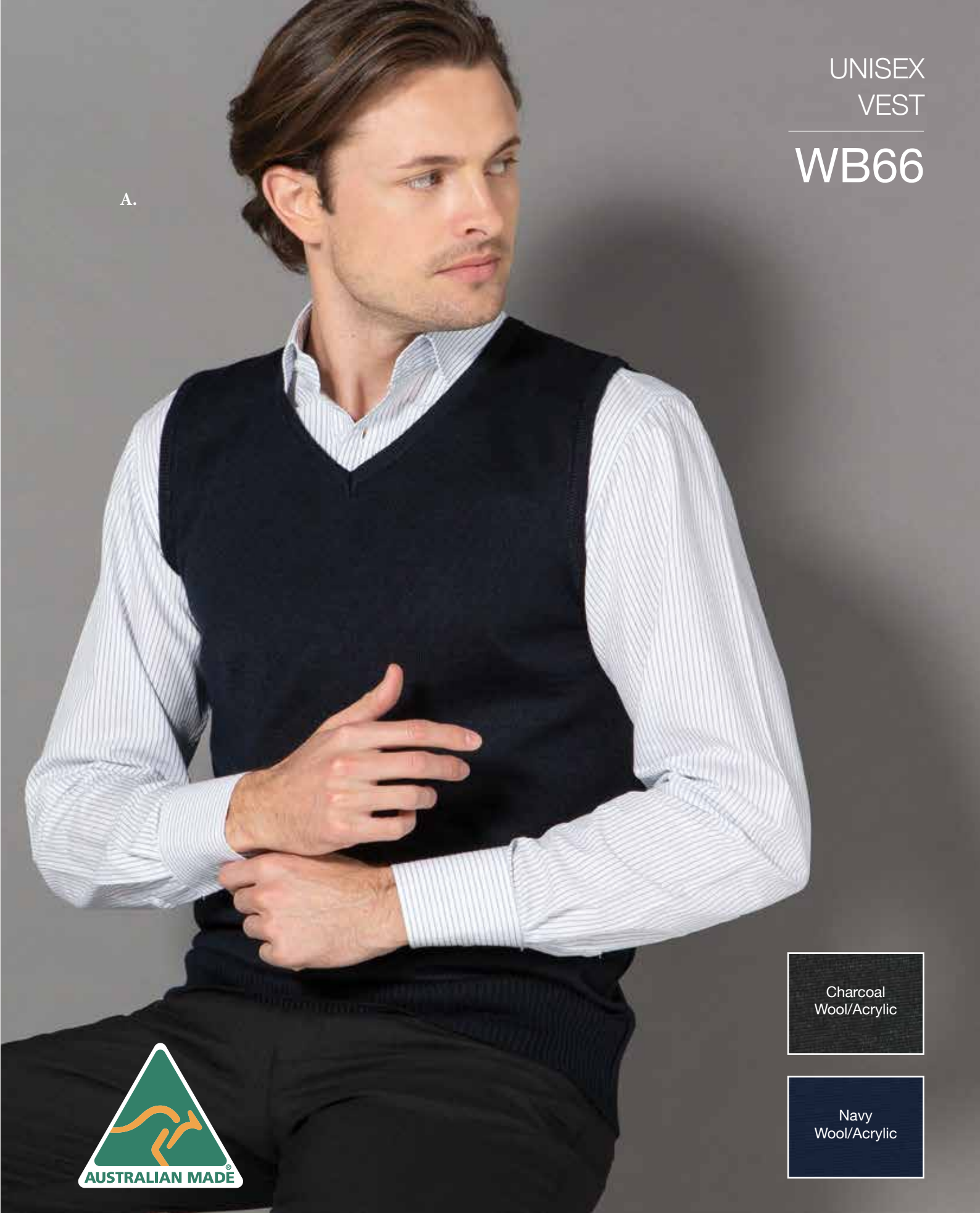
A. Long line easy fit button up Wool/Acrylic cardigan vest, style: WBV2

Size	2XS	XS	S	M	L	XL	2XL	3XL	4XL
Half chest (cm)	43.5	46	48.5	51	53.5	56	58.5	63.5	66

UNISEX
VEST

WB66

A.



Charcoal
Wool/Acrylic

Navy
Wool/Acrylic



A. Unisex v-neck Wool/Acrylic vest, style: WB66

Size	XS	S	M	L	XL	2XL
Half chest (cm)	48.5	51	53.5	56	58.5	61

UNISEX
JUMPER

WB64

A.



Black
Wool/Acrylic

Charcoal
Wool/Acrylic

Navy
Wool/Acrylic



A. Unisex v-neck Wool/Acrylic jumper, style: WB64

Size	XS	S	M	L	XL	2XL
Half chest (cm)	48.5	51	53.5	56	58.5	61

The design you want... The colours you want... The fabric you want...

Your custom designed range...

Although there are many uniform ranges available on the market, quite often they are all offering the same colours, designs and fabrics. The LSJ Collection's custom design service allows you to create the image you want for your brand and stand out from the crowd. With minimums as low as 100 units and turnaround times starting from 8 weeks, your designer uniform is easier than you think.

Contact one of our high quality distributors to find out more today!

CUSTOM MAKE

Fabric	Style	Minimum	Timeframe*
LSJ stock line fabric (fabrics featured in this catalogue)	LSJ style**	100+ units	Manufacture: 8 weeks
LSJ stock line fabric (fabrics featured in this catalogue)	Custom designed style	100+ units	Pattern design: 1 - 2 months Manufacture: 8 weeks
Stock fabric from one of our many trusted fabric mill partners	Current or Custom design	100+ units	Pattern design: 1 - 2 months (if applicable) Manufacture: 8 weeks

* Time frame is taken from confirmation of order. Please allow time for decision making and approval process.

** Or minimal alteration to an existing current style such as pockets added or sleeve length change



Fast Turnaround
Times of 8 Weeks



Low Minimums of
100 Units



In-House Design
Team



Wide Range of
Fabrics to Choose
From

PRODUCT AVAILABILITY

Fabric	Colour	Pants & Shorts										Skirts							
		166K	172K	173K	174K	175	176K	189	197	1022	1027	1029	301	303	315	319	329	375K	3005
Micro Fibre (MF)	Black					•		P 12	•	•					P 19	P 20	•		•
	Navy					P 9		•	•	P 45					•	•	P 22		P 18
Polyester (ME)	Black	•	•	•	P 11		•	•	P 13	•	P 53							•	
	Charcoal		P 25	P 10	•			•	•	•	•			P 21				P 24	
Poly/Viscose (MG)	Navy	P 15	P 8		P 36		P 14	•	•	P 6			P 8	P 23				•	
Sorrento (KN)	Black																		
	Navy																		
Wool Tech (WT)	Black				•			•		•	P 51		•		•				
	Charcoal				•			•		•	P 7		•		•				

Fabric	Colour	Shirting																	
		200	200L	208	211	214	220	222	233	233L	241	242	244	244L	245	296L	297L	297S	299S
Bourke Street (BK)	Blue																		•
	Wisteria																		P 49
Breeze (BR)	Print 50							•											
	Print 51							•											
	Print 52							•											
	Print 53							•											
End on End (EE)	Charcoal	•																	
	Navy	•																	
	Plum	P 52																	
Flinders (FL)	Print 80																P 44	P 23	
	Print 81				P 45												•	•	
Freedom (PL)	Blast																		
	Charcoal																		
	Harbour																		
	Pepper																		
Gingham (GI)	Black	P 50																	
	Blue	•	•																
Lonsdale (LO)	Blue			•			P 11												
	Charcoal						•												
	Plum						P 51												
Newbury (NW)	White														P 46				
	Black											P 47	•						
	Grey								•	P 48									
Shadow Stripe (SS)	Black																		
	White																		
Sorrento (KN)	Black																		
	Navy																		
	Red																		
	Pewter																		
Stretch Crepe (CR)	Print 60																		
	Black										P 20	P 39		•					
	Navy										P 38	•		•					
Stretch Freedom (SF)	Sky										P 15	P 18		P 40					
	Navy				P 54	P 55													
Wave (WA)	Print 30																		
	Print 31																		
	Print 32																		

Fabric	Colour	Scrubs																	
		500	502	505	550	551	552	553	LA9063	LA9306	LA9329								
Stretch Poly/Viscose	Navy	P 34	P 35		P 34		P 35												
Stretch Poly/Rayon	Navy			P 27				P 26											
Stretch Rayon/Poly	Black								P 32	P 32									
	Caribbean								P 30	P 30									
	Ceil Blue								P 31	P 31									
	Graphite								P 29	P 29									
	Teal								P 28	P 28									
	True Navy								P 33										P 33
Seasonal Printed Designs						•													

PRODUCT AVAILABILITY

Fabric	Colour	Dresses		Jackets		
		454	420	8612	8610	651
Micro Fibre (MF)	Black		•	•		•
	Navy		•	P 4		•
Polyester (ME)	Black					•
	Charcoal		P 17		•	•
Poly/Viscose (MG)	Navy					
Sorrento (KN)	Black	P 16				
	Navy	•				
Wool Tech (WT)	Black				P 3	•
	Charcoal				•	P 5

Fabric	Colour	Pharmacy	
		903S	910S
Lusterlene	White	P 37	P 37

Fabric	Colour	Shirting											Tops			
		2162	2166	2172	2175	2010L	2010S	2022L	2022S	2023L	2024L	2026L	2097S	702	709	711
Bourke Street (BK)	Blue					•	•	P 49	•							
	Wisteria		•			•	•	•	•							
Breeze (BR)	Print 50	P 64		•												
	Print 51	•		•												
	Print 52	P 58		•												
	Print 53	P 25		•												
End on End (EE)	Charcoal					•		P 52								
	Navy					•		•								
	Plum					•		•								
Flinders (FL)	Print 80							P 45					•			
	Print 81							P 6					P 44			
Freedom (PL)	Blast	•		•	•											
	Charcoal	P 57		•												
	Harbour	•		P 57	•											
	Pepper	•		•	•											
	Periwinkle	•		•	P 56											
Gingham (GI)	Black					•		•								
	Blue					•		P 50								
Lonsdale (LO)	Blue					•		•								
	Charcoal					•		P 51								
	Plum					•		•								
Newbury (NW)	White										P 46					
	Black										P 47					
	Grey								P 48							
Shadow Stripe (SS)	Black			•		P 53										
	White			P 53		•										
Sorrento (KN)	Black													P 42	P 13	•
	Navy													P 14	•	•
	Red													•	P 43	•
	Pewter													•	P 5	•
	Print 60													•	•	P 41
Stretch Crepe (CR)	Black															
	Navy															
	Sky															
Stretch Freedom (SF)	Navy															
Wave (WA)	Print 30	•														
	Print 31	P 59														
	Print 32	•														

Fabric	Colour	Jumpers		Vests		Cardigans		
		WB64	WB414	WB66	WB412	WB410	WBV2	WBV4
Wool Acrylic	Black	P 66	P 62		•	•		P 60
	Charcoal	•		•	•	P 63		•
	Navy	•	•	P 65	P 61	•	P 64	•

How To Read The Reference Chart

P X = Page reference of where this fabric and style is pictured in the catalogue

• = Product is available and ongoing in this fabric and style but not pictured - See our website lsjcollection.com.au for more images

the
LSJ
collection

EDITION N°23

Healthcare

